

D O N N A J O N E S

MORE POLICE
SAFER STREETS

H A M P S H I R E & I S L E O F W I G H T

Restorative Justice across Hampshire and the Isle of Wight

Lisa Allam

Commissioning and Contracts Manager

17th November 2022

Police and Crime Plan – ‘More Police Safer Streets’

Police and Crime Commissioner launched her Police and Crime Plan in November 2021 and made the following commitments:

- **Tackle Anti-Social Behaviour** – *‘Explore increased use of Restorative Justice for victims of Anti-Social behaviour’*
- **Improved outcomes for victims** – *‘Ensure that all victims are given the opportunity to benefit from Restorative Justice’ and ‘Fund and deliver Restorative Justice Services’.*
- *‘Ensure the Criminal Justice System delivers better outcomes for Victims’.*
- *‘Work with offenders to support them in making better choices to reduce reoffending’.*

DONNA JONES

**MORE POLICE
SAFER STREETS**

HAMPSHIRE & ISLE OF WIGHT

Current situation

- Until April 2022, PCCs received annual grant from the Ministry of Justice – Victim Services Fund
- Following three year spending review – Victim Services Fund now until 31st March 2025
- MOJ grant agreement dictates RJ must be funded but amount is not ring-fenced
- Current contract started 1st April 2018 – ends 31st March 2023
- Annual budget - £375,000 (£325,000 MOJ Victims Grant, £50,000 general commissioning budget)
- Previously MOJ Victims Grant was exclusively for victim initiated RJ
- Additional £50,000 was to enable Police to refer low level neighbourhood dispute cases with no identified harmed/harmer and for offender initiated RJ

DONNA JONES

**MORE POLICE
SAFER STREETS**

HAMPSHIRE & ISLE OF WIGHT

Scope of current contract

- Connection to Hampshire Police Force area – either the victim/offender lives in Hampshire, Isle of Wight, Portsmouth or Southampton (HIPS) or offence committed in HIPS
- No time limits – oldest case was over 40 years ago
- Victims of offences committed by those aged 18+ unless outside of scope of YOT
- Any offence type*
- Justice Select Committee 2016 - *While Restorative Justice will not be appropriate in every case, it should not be excluded simply by reason of the type of offence committed*. The APPG Inquiry report supports this and states that *'decisions based on risk avoid situations where harmed parties are disempowered if decisions are made on their behalf'*.
- APPG Inquiry 2021 - The report highlights that disparities in the type of offence considered appropriate for Restorative Justice presents further barriers to equal access for victims and evidence presented to the enquiry suggests that these decisions are often made by individuals who do not necessarily have the appropriate experience or knowledge of Restorative Justice to make an informed decision about its suitability.

Scope of current contract cont:

- Quality service delivery – Restorative Justice Council – Quality Mark
- Raise awareness and understanding of the service and its potential benefits
- Innovative elements - Development of RJ DA training and a partnership policy for the safe management of sensitive and complex RJ cases

“I feel like I offloaded everything in that meeting and gave it back to him. My first feeling as the meeting ended was one of relief – I’d got through it and come out the other side. But then I started to feel as if the huge, filthy grey cloud I’d had hanging over me for 40-odd years had finally gone away”. Restorative Justice Participant Wendy.

DONNA JONES

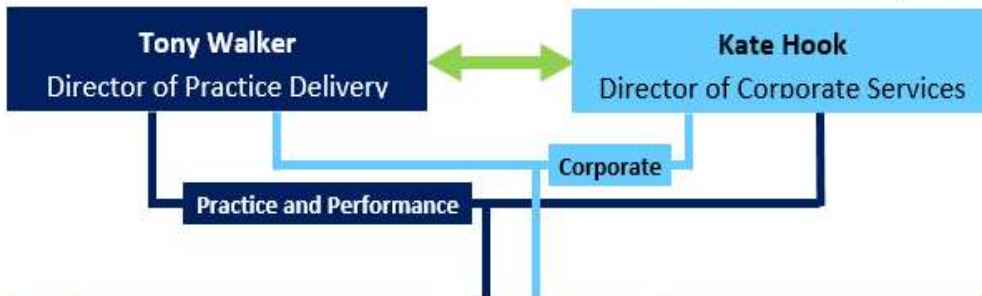
**MORE POLICE
SAFER STREETS**

HAMPSHIRE & ISLE OF WIGHT

Hampshire and IOW Service Model



Hampshire Contract Management Structure



No.	Job Role	Hours	Area
1 x	Service Delivery Manager	Full Time	Hampshire
1 x	Referrals and Data Coordinator	Full Time	Hampshire
6 x	RJ Lead Practitioners	Full Time	South East and Western Hants
		Full Time	Western Hants
		0.8 Week	Northern Hants
		0.6 Week	Northern and Western Hants
		0.4 Week	South West Hants
		0.4 Week	IOW (Subcontracted by AgeUK)

- All HIOW RJ staff have achieved or working towards Restorative Justice Council (RJC) Practitioner Registration
- HIOW RJ Service has achieved Registered Service Provider status with RJC
- Staff supported by a team of volunteers (15 currently)
- Staff and volunteers working on serious and complex cases have specific and accredited training
- Table below shows in 2021/22 service had on average 86% more active cases open per quarter, than it did in 2018-2019
- Lead practitioner has an average of 14 active cases at any one time which fluctuates

Active Cases, 2018 – 2019	Q1	22	Q2	37	Q3	29	Q4	37
Active Cases, 2021 – 2022	Q1	51	Q2	67	Q3	46	Q4	63

DONNA JONES

**MORE POLICE
SAFER STREETS**

HAMPSHIRE & ISLE OF WIGHT

MORE POLICE SAFER STREETS

Key outputs over the last four years

RJ Referrals

With the exception of 2020-2021 (Covid impact) each contract year has shown an increase in referrals to the RJ Service.

Contract Year	2018-2019	2019-2020	2020-2021	2021-2022
RJ referrals received	185	215	192	315

Pro-active contact (on behalf of Police) to make victims aware of RJ

Contract Year	2018-2019	2019-2020	2020-2021	2021-2022
Victims identified from Taskbox	532	929	1176	1141
Victims spoken to directly	378 (71.1%)	455 (49%)	537 (45.7%)	458 (40.1%)
Victims who agreed to next step of RJ	59 (16.6%)	73 (16%)	105 (19.6%)	63 (13.8%)

Average conversion rate of 16% which has risen to 20% in Q1/Q2 of 2022/23 – 30% when Police victims taken out

DONNA JONES

**MORE POLICE
SAFER STREETS**

HAMPSHIRE & ISLE OF WIGHT

Key outputs over the last four years cont:

Restorative Justice Processes

Contract Year	2018-2019	2019-2020	2020-2021	2021-2022
Cases closed and completed	203	224	191	339
Cases RJ process was facilitated	32 (15.8%)	90 (40.2%)	132 (69.1%)	278 (82%)
RJ discussions between victim and LP	5 (15.6%)	28 (31.1%)	87 (65.9%)	149 (53.6%)
Direct Restorative Process	15 (46.9%)	17 (18.9%)	5 (3.8%)	9 (3.2%)
Indirect Restorative Process (Shuttle RJ)	11 (34.4%)	45 (50%)	40 (30.3%)	50 (18%)
Indirect Restorative Communication (Letter)	1 (3.1%)	0 (0%)	0 (0%)	70 (25.2%)

Re-offending tracker

Contract Year	2018-2019	2019-2020	2020-2021	2021-2022
Number of restorative processes facilitated in corresponding reporting period of the previous year	21	30	63	43
Number of offenders who have not reoffended	20 (95.2%)	25 (83.3%)	43 (68.3%)	37 (86%)

Key outputs over the last four years cont:

Victim and Survivor Engagement

Contract Year	2018-2019	2019-2020	2020-2021	2021-2022
Cases closed and completed	203	224	191	339
Victims contacted by facilitator	159 (78.3%)	177 (79%)	162 (84.8%)	301 (88.8%)
Victims who received an initial RJ meeting in face/video/indirect method	68 (100%)	119 (96.7%)	101 (100%)	182 (100%)
Victims who agreed to RJ process after initial face/video/indirect meeting	50 (73.5%)	95 (79.8%)	69 (68.3%)	151 (83%)

Offender Engagement

Contract Year	2018-2019	2019-2020	2020-2021	2021-2022
Cases where the victim agreed to RJ process after initial meeting with LP	50	95	69	151
Offenders contacted by facilitator	48 (96%)	74 (77.9%)	57 (82.6%)	135 (89.4%)
Offenders who received an initial RJ meeting in face/video/indirect method	34 (70.8%)	62 (83.8%)	40 (70.2%)	127 (94.1%)
Offenders who agreed to RJ process after initial face/video/indirect meeting	24 (70.6%)	52 (83.9%)	40 (100%)	126 (99.2%)

Key outputs over the last four years cont:

Mediation Service

	2018/19	2019/20	2020/21	2021/22
Number of referrals made by the Police for neighbour disputes with no formal action taken	104	86	78	94
Total number of referrals made to the mediation services during the reporting period	61 (58.7%)	65 (75.6%)	60 (76.9%)	89 (94.5%)
Total number of direct mediation processes facilitated	8	5	2	6
Total number of indirect mediation processes facilitated	7	1	32	45

Commissioning arrangements from 1st April 2023

- New contract 1st April 2023 – 31st March 2026 (potential to extend for up to 2 years)
- Increased investment with additional funding from Probation for new contract
- Offender-initiated referrals from HMPPS, training for Probation Officers and staff and further exploration of the use of Restorative Justice in responding to conflict within the secure estate
- Tackling ASB is a top priority for the PCC and there will be a renewed focus on working with partners from Hampshire Constabulary, Local Authorities and businesses to explore how Restorative Justice may be used as a potential response to ASB issues. This may involve linking in with the Anti-Social Behaviour Task Force and building effective partnerships with Community Safety Partners.
- Registered Provider with the RJC
- Registered Practitioners with the RJC – Advanced level for sensitive and complex

D O N N A J O N E S

MORE POLICE
SAFER STREETS

H A M P S H I R E & I S L E O F W I G H T